

WHAT'S REALLY IN YOUR MEAT?

IMPROVE SAFETY AND QUALITY
SAVE MONEY BY REDUCING WASTE



SPECIM FX cameras detect and analyze much more than traditional imaging or point spectroscopy:

- Simultaneous detection of unwanted materials and contaminants; bone, cartilage, plastics, wood, rubber, metal, parasites
- In-line non-contact chemical analysis and grading; chemical lean / fat content, protein, water, tenderness

Integrate SPECIM FX camera to your meat processing line to

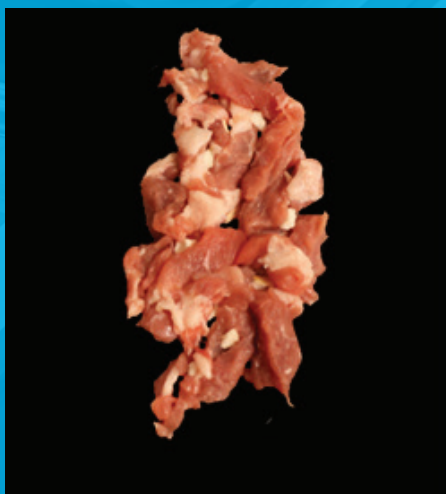
- Improve your product safety through reliable removal of foreign materials
- Improve your product quality through 100% in-line analysis
- Avoid extra cost by meeting legal prerequisites for the amount of fat, protein and collagen

SPECIM FX IS A LINE SCAN PUSH-BROOM HYPERSPECTRAL CAMERA. IT CAN BE INTEGRATED IN QUALITY CONTROL AND SORTING PROCESSES TO ENHANCE CAPABILITY FOR PRODUCT INSPECTION AND PROCESS ANALYTICS.

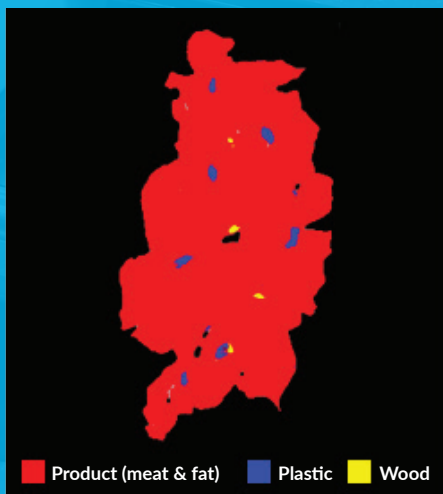
SPECIM FX CAMERA

- Enables precise and reliable chemical detection and identification based on all materials' unique and distinctive spectral signatures.
- Adds value to RGB camera or X-ray detection.
- Brings simultaneous capability to measure chemical concentrations, like water, fat and protein content in the product.

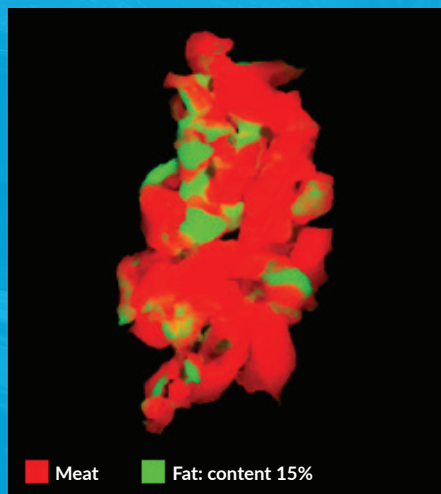
PRODUCT	FOREIGN MATERIAL DETECTION	QUALITY GRADING
Meat	Bone, plastic, rubber, wood, metal	Chemical lean/fat content, water, protein, collagen, tenderness, Ph
Chicken	Bone, cartilage, blood, plastic, rubber, wood, metal	Wooden breast, fat, water, protein
Fish	Parasites, blood, plastic, rubber, wood, metal	Fat content



This is what human eye and color camera see.



This is what SPECIM FX17 camera finds.



Simultaneously to foreign material detection, SPECIM FX17 provides chemical grading, like fat content.

HOW CAN INTEGRATORS REACH QUICK SOLUTIONS?

Specim offers camera SDK and ASCII control protocol to system integrators and OEMs to integrate the FX cameras to your own system software solutions. Or we can assist you to find a compatible commercial software tool for quickly implementing a real time inspection solution.

Contact us: info@specim.fi

Visit our website: www.specim.fi

Follow us on social media: [@specimspectral](https://twitter.com/specimspectral)