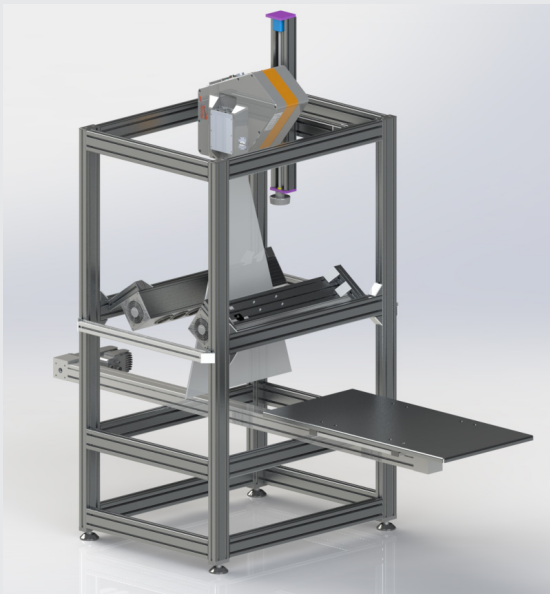


## LabScanners for Spectral Cameras

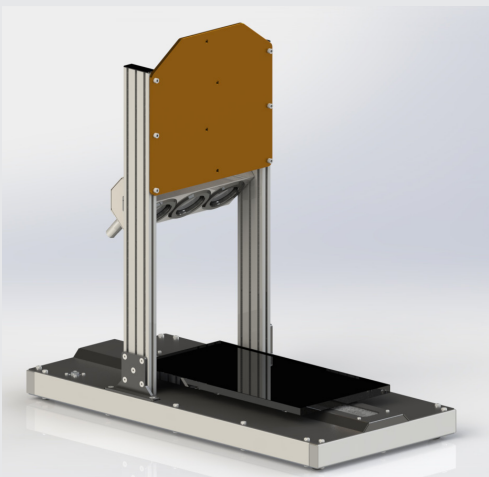
SPECIM designs and manufactures state-of-the-art table type scanners resulting in pushbroom imaging solutions for hyperspectral data collection. LabScanners are optimized for each spectral range including suitable illumination units.

### LabScanner Setup 100 x 50



Camera height adjustment: 20", self-holding  
Scanning speed capabilities: Speed max 500 mm/s  
Interface: Controlled thru spectral camera or with separate control cable, USB or RS232  
Mount designed for the required Spectral Camera  
Halogen illumination for VNIR and SWIR, or thermal line sources for LWIR and MWIR  
Sample tray with dimensions 100 cm x 50 cm  
Translation stage  
White calibration tile for VNIR and SWIR spectral ranges or sand blasted aluminium bar for LWIR and MWIR  
Controllable by SPECIM 's SpectralDAQ software

### LabScanner Setup 40 x 20



Camera height adjustment: No  
Scanning speed capabilities: 65 mm/s  
Interface: Controlled thru spectral camera or with separate control cable, USB or RS232  
Mount designed for the required Spectral Camera  
Halogen illumination  
Sample tray with dimensions 21 cm x 40 cm  
Translation stage  
White calibration tile for data normalization  
Controllable by SPECIM 's SpectralDAQ software