

For Immediate Release

New Product Release

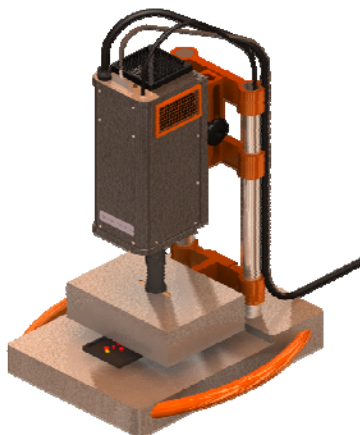
February 12, 2008 SPECIM, Spectral Imaging Ltd., a leading provider of Hyperspectral Imaging technology and solutions, has announced the release of sisuCHEMA during the Analytica trade fair, held in Munich, Bavaria, Germany, April 1-4 2008.

SisuCHEMA is a completely integrated Chemical Imaging Workstation for applications in laboratory and near production lines. SisuCHEMA is straightforward to configure, simple to use, and has the fastest data capture rate of any chemical imaging solution on the market. Full hyperspectral data from samples (e.g. pharmaceutical tablets, seeds and forensic samples) are acquired within seconds. Heat load on the sample has been reduced using SPECIM'S innovative illumination technology.

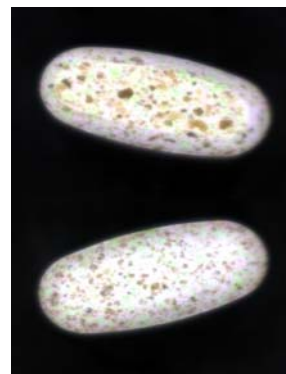
What's more, SisuCHEMA includes Evince; a powerful chemometrics and image processing software package. With Evince, users can immediately process image data, and explore the spectral and spatial information, as well as classifying and quantifying image content. Furthermore, users can build spectral calibrations and prediction models for their specific chemical imaging applications.

SisuCHEMA employs SPECIM's hyperspectral imaging technology in the SWIR (970-2500 nm) range. This powerful push-broom imaging technology is not limited to imaging samples, but also makes an ideal solution in applications requiring continuous on-line process monitoring. Consequently the application developed for sample analysis in laboratory can be directly applied to the online process and quality control using the same modular technology.

For more information visit [The SPECIM Website](#)



Picture 1: SisuCHEMA imaging hyperspectral unit



Picture 2: Tablet uniformity analyzed with SisuCHEMA