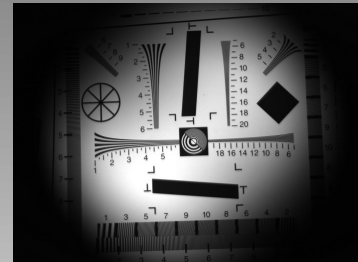


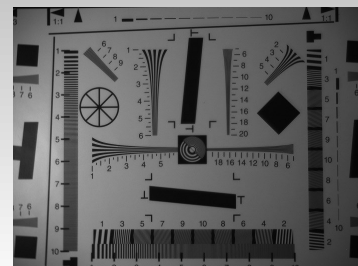
## CSI LNIR20 Relay Lens Assembly

The CSI Relay Lens Assemblies were specifically developed for use with VariSpec Liquid Crystal Tunable Filters (LCTF). The typical implementation for mounting a VariSpec LCTF filter with an area scan camera is to attach the filter to the face of the objective lens. This presents several challenges including significant vignetting of the image and difficulties in adjusting the image focus.



Without Relay Lens

To address these issues, the relay lens moves the VariSpec LCTF filter between the objective lens and the camera sensor minimizing the vignette effect and allowing for easy focus adjustment and replacement of objective lenses. We have available a standard relay lens assembly for the VariSpec LNIR filter along with custom development for other spectral ranges and applications.



With Relay Lens

<b>Relay Lens Model</b>	LNIR20
<b>Part Number</b>	CSI-LNIR20-Relay
<b>Spectral Range</b>	900 - 1700 nm
<b>Magnification</b>	1.28x
<b>LCTF Bandwidth</b>	20 nm
<b>Sensor Size Supported</b>	16.4 mm
<b>Adjustable Iris</b>	No
<b>Aperture</b>	20 mm
<b>Optical Interface</b>	C-mount

More detailed specifications available upon request



Spectral-VIS TF System with relay lens



Spectral-IR TF System with relay lens

Product Information, Application and Tech Support at [www.channelsystems.ca](http://www.channelsystems.ca)