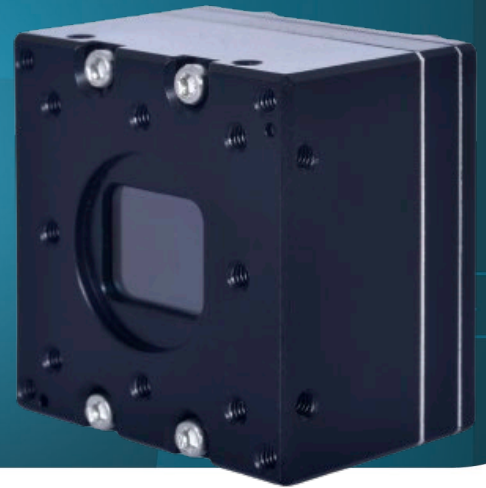


**HIGH-RESOLUTION UNCOOLED
THERMAL CORE**

Xenics
EXOSENS GROUP

Crius 640 Series



*ULTRA-COMPACT VGA
THERMAL IMAGING CORE*

KEY FEATURES



**VERY HIGH RESOLUTION - 12 μ m
FOR BETTER DRI RANGES**



**SMALL, LIGHT & LOW POWER
CONSUMPTION**

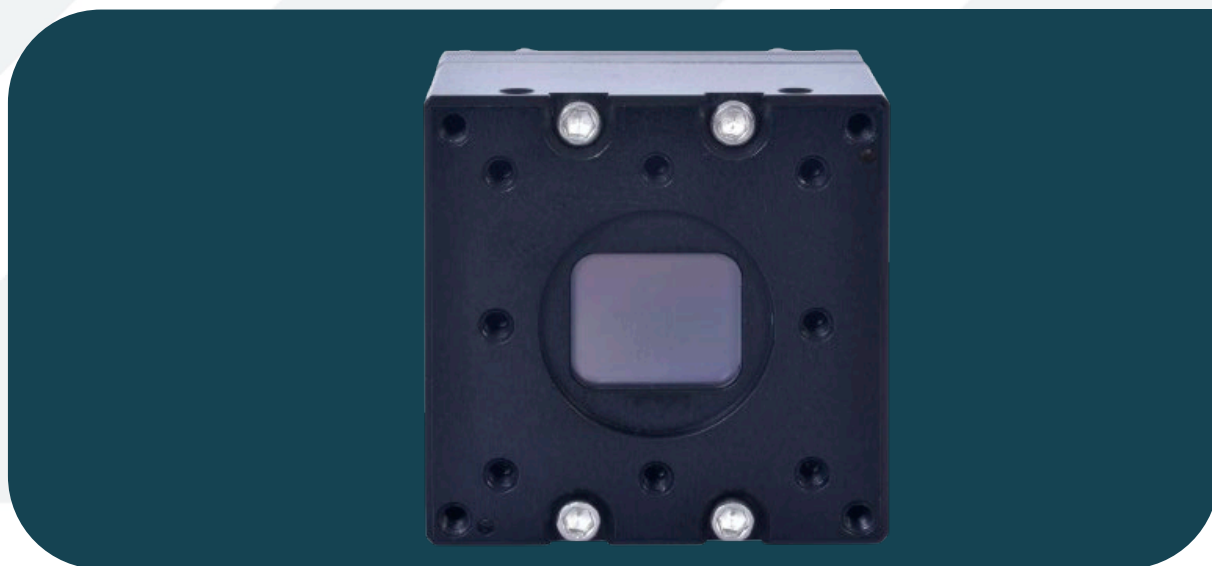


FRAME RATE UP TO 60 FPS

Thanks to its amazing compactness and the outstanding resolution, Crius series enable enhancement of electro optical-systems performances: major benefit is DRI (Detection Recognition Identification), a key factor for long range observation platforms in Search and Rescue or surveillance of sensitive areas for plants, border.

Its generic design ensures easy integration and retrofit of existing E/O systems in defense and security.

Crius 640 Series



KEY PERFORMANCES

| | |
|-------------------------------|-------------------------------|
| Sensor | Micro-bolometer technology |
| Resolution / Pixel Pitch | 640 x 480 pixels / 12 μ m |
| Spectral Range | 8 – 14 μ m |
| Max NETD (F/1 ; 300K ; 30 Hz) | < 50 mK or < 40 mK |
| Operating temperature range | -20°C to +60°C |
| Power consumption (DF40) | < 1.2 W |
| Qualification | Industrial (Standard grade) |

FUNCTIONS & INTERFACES

| | |
|-------------------------------|--|
| Image processing | BPC (Bad Pixel Correction), NUC (Non-Uniformity Correction), Shutterless NUC |
| Image optimisation | AGC (Automatic Gain Control) |
| Output options | CL, SDI, DF40 |
| Additional option | On DF40: Handheld/manual control interface + micro display interface |
| Dimensions (L x B x H) (DF40) | 30 x 30 x 23 mm ³ |
| Weight (DF40) | < 38 g |

PRODUCT SELECTOR GUIDE

| | |
|--------------------------------------|-------------------------------------|
| XEN-000920 [Crius 640 50 mK (60 Hz)] | XEN-000921 [Crius 640 50 mK (9 Hz)] |
| XEN-000922 [Crius 640 40 mK (60 Hz)] | XEN-000923 [Crius 640 40 mK (9 Hz)] |

advancedimaging@exosens.com



exosens.com

EXOSENS
REVEAL THE INVISIBLE